

PART OF THE SW. 1/4, SEC. 23, T.5N., R.1W., S.L.B. & M.  
**EAST HIGHLAND ESTATES SUBDIVISION NO. 2**  
 LOTS 26-35  
 IN WEBER COUNTY  
 SCALE 1" = 50'

TAXING UNIT: 159

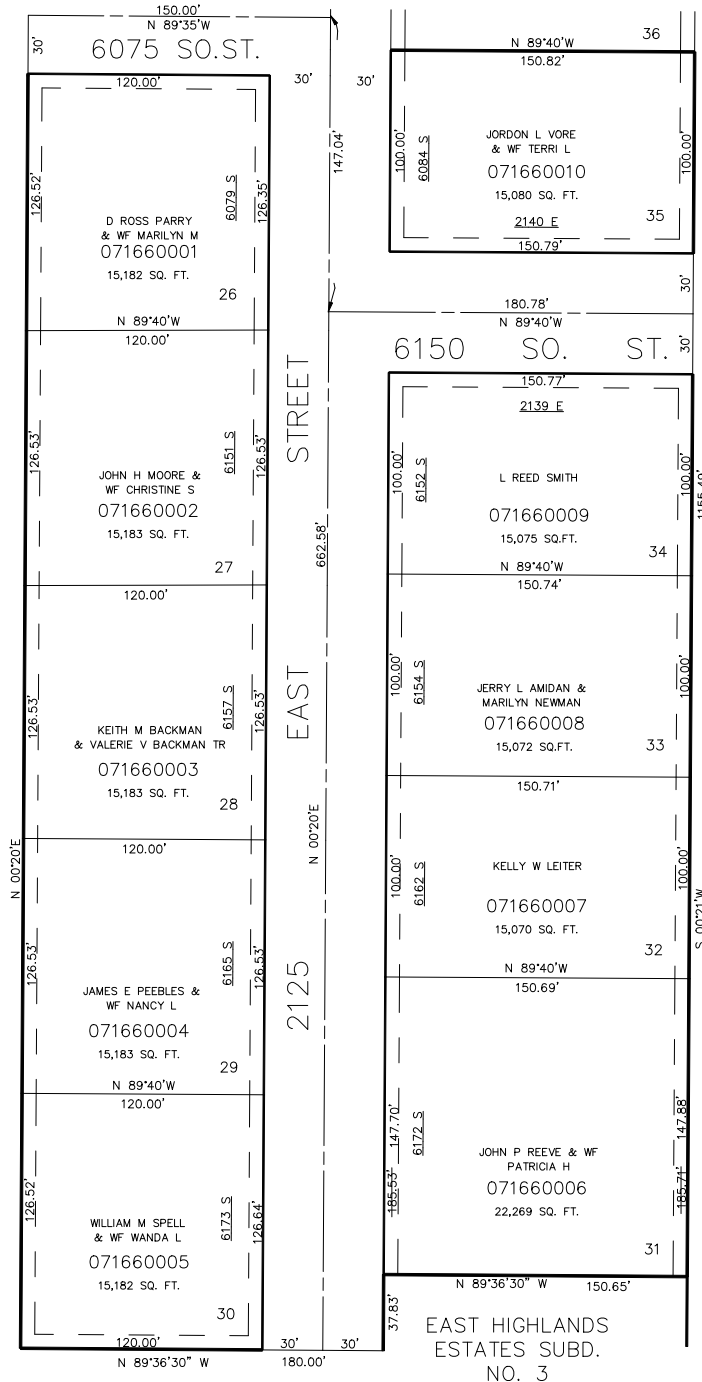
SEE PAGE 165

SEE PAGE 142

SEE PAGE 97

SEE PAGE 97

FOR COMPLETE ENG DATA SEE ORIGINAL DEDICATION PLAT IN BOOK 18, PAGE 77 OF RECORDS.



SEE PAGE 175